



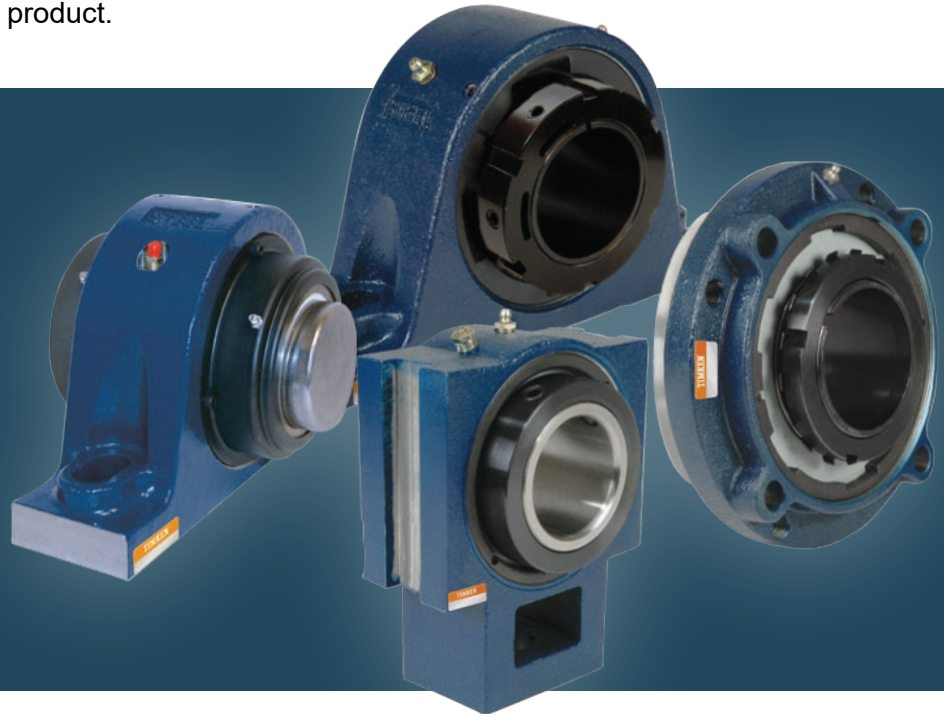
# ***BDI Creates an Application-Specific Pillow Block Housing Solution for Steel Mill***

## **PROBLEM ▼**

A Northeast Ohio steel mill was using standard cast-iron-housed pillow block bearings on its run-out table. Due to the high ambient temperature of this application, an external water bath was installed to cool the bearing housings, but overspray left water spots on the finished product.

## **THE SOLUTION:**

BDI explored multiple manufacturers' offerings before settling on QM Bearings, a division of Timken. QM offered an internally circulating water-cooled bearing housing. Subsequent investigation and testing resulted in the final cast steel design now in operation. "The cast steel solution has resulted in even greater savings for the customer," says the mill's BDI Sales Representative.



## **SUCCESS MADE EASIER:**

Over the last three years, the mill's housing purchases have decreased consistently, owing to BDI's suggested modifications for greasing, installation and overall design.

**2010:** 300 housings purchased

**2011:** 220 housings purchased

**2012:** 200 housings purchased

**Total Savings = Approximately \$45,000.**

**Contact your local BDI branch for more information on application analysis and other BDI Solutions.**